



eurocopter
an EADS Company



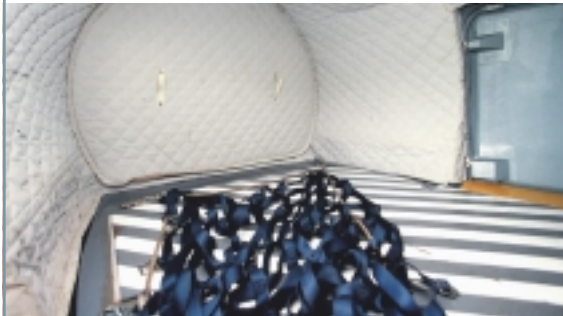


New standard for oil and gas industry

The new generation EC155 B1 offers offshore operators the most advanced technologies that ensure outstanding flight characteristics and remarkable safety features on ground and in flight. With a high speed of around 150 kts, the EC155 B1 can shuttle quickly from shore to rigs. The cutting-edge avionics and the four-axis digital autopilot considerably reduce pilot workload to enhance safety in all weather conditions. The EC155 B1 benefits from years of Dauphin experience and has been designed to ensure low maintenance costs while providing the highest rate of availability.

New standard in oil industry

The wide unobstructed cabin can accommodate up to 12 passengers + 2 pilots in comfort. The cabin is easily accessed by large forward doors and wide rear sliding doors with full-length boarding steps. In addition to the low vibration level, passengers will appreciate the ample leg room, all forward facing seats and the panoramic visibility offered by the large windows. The huge baggage compartment is accessible from both side and easily allows the loading of bulky luggage. It is also possible to remove the cabin compartment separation panel for further space. For enhanced safety, the two emergency exits have been enlarged.



Luggage compartment. Hold volume: 2,5 m³ (88 cu.ft)



Cabin volume : 6,66m³ (235 cu.ft)



One side refuelling



12 high back seats with 4 point harnesses - Club configuration



Emergency floatation system

2 liferafts (10 pax each)

12 seat facing forward configuration

- Full rotor de-icing system
- Jettisonable upper windows
- HEEL: Emergency exit lighting
- Radar altimeter, AVAD, TCAS
- HUMS, CVR/FDR and underwater locator beacon.



ADELT

Electrical rescue hoist (272 kg / 600 lb)

Cargo Hook

